



ETERNAL PEACEFUL LIVING

PREMIUM
4 BHK
LAVISH
LIVING
EXPERIENCE

@ Iscon-Ambli road


aatman



Elevate Your Lifestyle, Where Every Home is a Peaceful Sanctuary.

Where homes are not just spaces but peaceful sanctuaries, providing a lifestyle that transcends the ordinary with unmatched comfort and sophistication.





Peaceful Life with Prime Location

Positioned away from the urban hustle, this residence ensures privacy and serenity, with a Jain derasar merely steps away. Surrounded by lush greens, it's a haven of calm.

Labhadi Nidhan
Ambli Jain Temple



Grand Living

This project is a symphony of opulence. Elevate your lifestyle within a realm where every detail reflects grand living at its finest.



76
EXCLUSIVE
UNITS

G+9 G+10
A B
2 TOWERS

Epitome of Peaceful Living

Tranquil Residential Haven,
Nestled Away from City
Bustle. Enjoy Connectivity
Without Compromising Your
Serene Lifestyle.





Comfortable & Convenient Living

We Prioritize Your Ease.
With Reserved Parking and
Thoughtful Visitor Parking
Spaces, Your Comfort
Knows No Bounds.
A Warm Welcome Awaits
Both You and Your Guests.





Luxury of Lush Greens

A Central Oasis with Abundant Greenery, Inviting Sitting Areas, and Serene Water Elements, Creating an Idyllic Haven.



Social Serenity

Open Gathering Space, Featuring an Open
Amphitheatre Stage for Creating Beautiful Memories
with Friends and Family.



Serene Outdoors





A Grand Entrance, Step into Luxury with Lavish Arrivals. The Elegant Entrance Foyer and Wide Lift Lobby Set the Stage for Your Remarkable Journey Through This Exquisite Space.



Lavish Arrival



GROUND
FLOOR PLAN



W I D E R O A D

W I D E R O A D

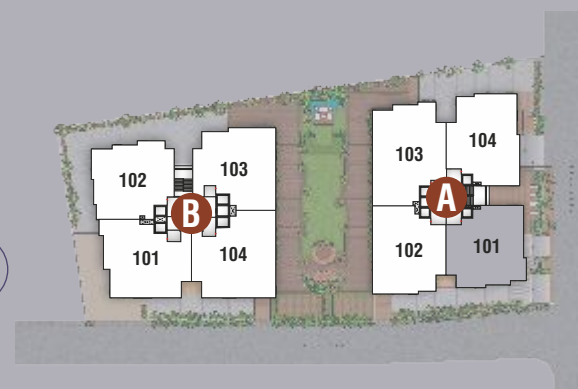
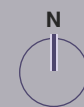


TYPICAL FLOOR PLAN





A 101 - 901
UNIT PLAN



A 102 - 902
UNIT PLAN

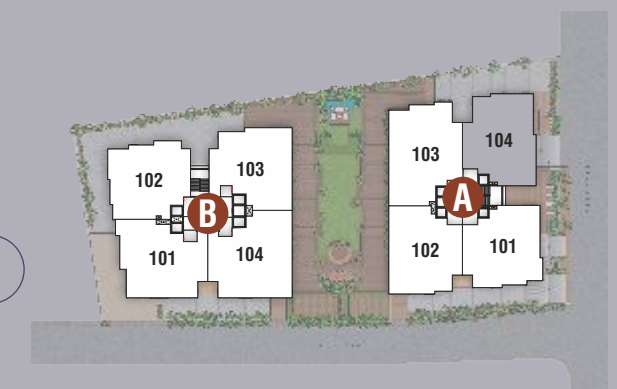




A 103 - 903
UNIT PLAN

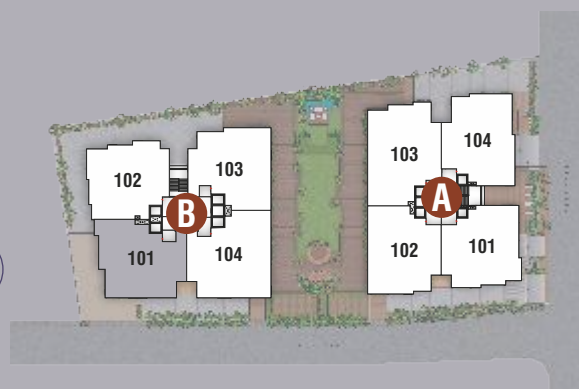


A 104 - 904
UNIT PLAN

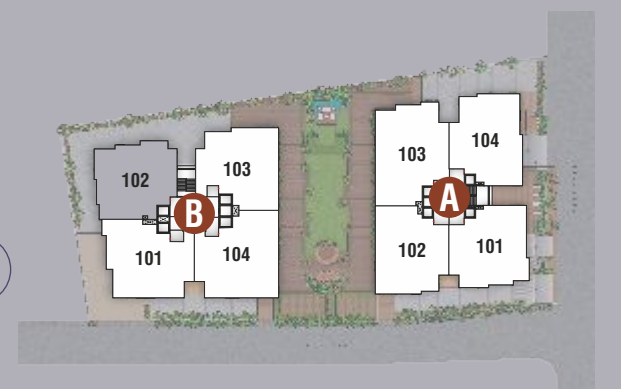




B 101 - 1001
UNIT PLAN



B 102 - 1002
UNIT PLAN





B 103 - 1003
UNIT PLAN



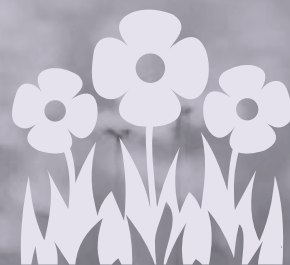
B 104 - 1004
UNIT PLAN



Amenities



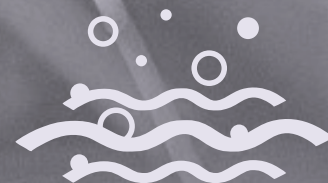
Jain Derasar @
Walking Distance



Central
Landscape Garden



Sit-out Space



Water Body



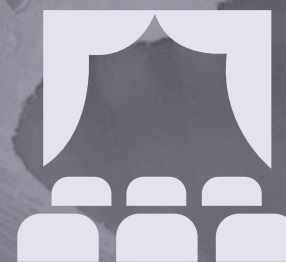
5 Lifts Per Block



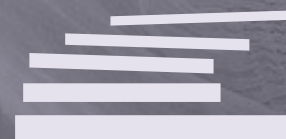
Gazebo Seating



Surrounded by
Lush Greens



Amphitheater



Wide Walkway



Children Play Area



2 Levels
of Basement



Drop-off Zone



24X7
Security

SPECIFICATION

Structure



- Earthquake resistant RCC structure.

Wall Finishies



- All internal walls finished with smooth finish gypsum plaster.
- All external walls with exterior grade paint.

Flooring & Dado



- Imported marble for Living, Dining and 2 Bedrooms.
- Wooden flooring for 2 Master Bedrooms.
- Premium vitrified tiles for flooring & cladding lintel for all bathrooms.

Bathrooms



- Premium make CP & Sanitary fixtures.
- All internal Water Supply Lines in CPVC Pipes.

Kitchen



- Provision for washing machine, refrigerator, water purifier & microwave points.
- Granite platform with SS sink.

Doors & Windows



- External doors: Main door with a teak wood frame.
- External windows: Premium quality double glazed aluminium / UPVS sliding windows.

Electrical



- Concealed PVC conduits with PVC insulated ISI grade copper wiring with sufficient light points.
- Branded Modular switches and sockets.
- DG power backup for common areas.

Utilities, Services & Facilities



- CCTV Surveillance, access control & visitor verification for security.
- Rain water harvesting.
- Professionally planned, designed & executed landscape.

Air-conditioning



- Split AC for all rooms.



Developed by:
Since 1985

MARUTI
INSPIRING REALTY

11th Floor, Elanza Vertex, B/h Armieda Clinic,
Sindhuhavan Road, Pakwan Cross Road, Bodakdev,
Ahmedabad, India, Gujarat

+91 99099 23456

marutibuildcon.com | Info@marutibuildcon.com

Architect :

APURVA AMIN ARCHITECTS

RERA No.: PR/GJ/AHMEDABAD/AHMEDABAD CITY/AUDA/RAA12710/161123

gujrera.gujarat.gov.in

NOTE : BROCHURE ISN'T A LEGAL DOCUMENT. | BY REFERRING THIS BROCHURE, NO CLAIM OR OBJECTION CAN BE RAISED BY A CUSTOMER. | THE PHOTOGRAPHS & ARTIST IMPRESSION ARE FOR REFERENCE ONLY.

aatman

Off Iscon Ambli road, Bh. Navratna Corp. park,
Nr. Rajyash Richmond, Ahmedabad.

Since 1985

MNRUTI[®]
INSPIRING REALTY